




FONTAINE[®]
HEAVY-HAUL

TRAVERSE[®]HT

The ultimate
Hydraulic Tail trailer



www.fontaineheavyhaul.com

 A Marmon Highway Technologies[®]/Berkshire Hathaway Company

The ultimate Hydraulic Tail trailer!



A winch only remote is standard with every trailer. The remote shown is the optional 4-function remote that puts you in control of the winch and rear ramp so you can move around to see what's happening as you load and unload.

www.fontaineheavyhaul.com

Industry leading technology and design

- 11° ramp angle for loading low clearance equipment with ease
- Super strong design lifts 25,000 pounds to loading dock height
- Heavy-duty 18,000# winch standard with wireless remote for loading disabled equipment with ease (upgrades available)
- Optional steel reinforced winch guard for added protection
- Dual controls located on side of gooseneck for easy access
- Protective cover plate on underside of gooseneck shields hydraulic system from road debris
- Convenient load securement – Alternating combo stake pocket/chain hook slot and double key hole chain slots on 18" centers with additional chain slots located in center of deck and on main tail
- Smooth operation and easy maintenance (greaseable main and flip tail)
- In-line manufacturing process assures consistent quality and dependable on-time delivery
- Manufactured to the highest quality – ISO 9001/2008

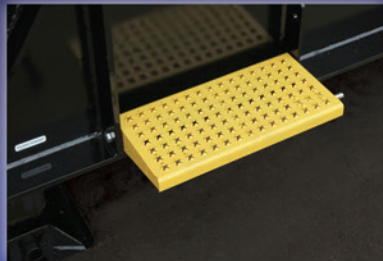
Rugged steel reinforced deck handles 40 tons evenly distributed, 33 tons in 16 feet or 25 tons in 10 feet





FONTAINE[®]
HEAVY-HAUL

TRAVERSE[®]HT



Convenient fold-down step and grab handle located on both sides of the trailer are standard equipment



Stow your gear in this locking storage compartment conveniently located on both sides of the gooseneck



Options such as on-board digital scales and tire inflation systems can be added to your trailer for even greater convenience

Hydraulic front power ramp (available with wood or metal deck) features 10,000 lbs lifting capacity for quick and easy loading on upper deck—Mechanical locking mechanism holds ramp in place

Full width heavy-duty tail hinge is the most durable in the industry

Traction tread plate with cleat bars on main and flip tail for easy track and rubber tire equipment loading

Hydraulic tail lowers for ground loading and rises to accommodate transfer docks up to 60 inches in height

TRAVERSE^{HT}

The ultimate
Hydraulic Tail trailer



www.fontaineheavyhaul.com • 205-467-6171